

Quarantine Declaration and Enquiry

Airports and Ports	Telephone Number
Incheon International Airport Regional Office	
Incheon International Airport	(Animal) 032-740-2661 (Plant) 032-740-2077
International Post Office	(Animal) 032-740-2684 (Plant) 032-740-2089
Express Logistics Center	(Animal) 032-744-5551 (Plant) 032-744-5554
Yeoungnam Regional Office	
Gimhae International Airport	(Animal) 051-971-4991 (Plant) 051-971-0480
Daegu Airport	(Animal) 053-982-5096 (Plant) 053-981-2838
Busan Port	(Animal) 051-441-1835 (Plant) 051-466-1836
Busan International Post	(Animal) 051-971-4991 (Plant) 055-388-3741
Jungbu Regional Office	
Terminal 1, Incheon Port	(Animal-Plant) 032-891-3245
Terminal 2, Incheon Port	(Animal-Plant) 032-772-0147
Cheongju International Airport	(Animal-Plant) 043-213-0287
Pyeongtaek port	(Animal-Plant) 031-8053-7707
Seoul Regional Office	
Gyeongui Line (Dorasan Station)	(Animal-Plant) 031-950-5353
Gimpo International Airport	(Animal) 02-2664-0601 (Plant) 02-2664-3844
Donghae Port, Sokcho Port, Yangyang International Airport	(Animal) 033-635-9125 (Plant) 033-635-3862
Honam Regional Office	
Gunsan Port	(Animal-Plant) 063-460-9430
Muan International Airport	(Animal-Plant) 062-975-6030
Jeju Regional Office	
Jeju International Airport	(Animal) 064-746-0761 (Plant) 064-746-2460
Jeju Port	(Animal-Plant) 064-728-5350



**Animal and Plant
Quarantine Agency**
www.qia.go.kr



“
**Bring foreign animals,
livestock products, and
plants into Korea is strictly
prohibited.**
”



※ Foreign animals, livestock products, and plants can be accepted only when they pass quarantine inspection.



**Animal and Plant
Quarantine Agency**
www.qia.go.kr

To prevent infectious animal disease and foreign insect pests, quarantine is carried out to all animals, livestock products, and plants of every airport and port, and only tested goods are allowed to bring into the Korea.



Quarantine Procedure

- ▶ Declare to quarantine officers when you carry animals, livestock or plants.

※ Quarantine is required when foreign agricultural or livestock products are bought in through postal service also.

- ▶ Foreign animals, livestock products, and plants can be accepted only when quarantine officer inspects and checks goods, health certificate, imported country, etc.

※ Fail to report animal, livestock product, or plant is subject to the fine up to KRW 5,000,000.

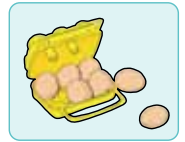
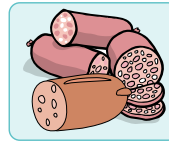
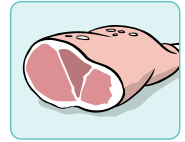
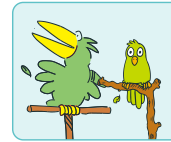
When Traveling Abroad

- ▶ It is prohibited to bring foreign animals, livestock products, or plant into Korea.
- ▶ Refrain from visiting a livestock farm or market in foreign countries.
- ▶ Refrain from visiting any livestock facility for 5 days after arrival in Korea.

Subject to Quarantine(Restricted Items)

Animal and Livestock Product

- ▶ **Animal:** dog, cat, pet bird, etc.
- ▶ **Meat and Meat Product:** beef, pork, chicken, duck meat, sausage, ham, beef jerky, meat can, boiled meat, processed meat/fat product (curry) etc.
- ▶ **Animal product:** deer antlers, bone, feathers, etc.
- ▶ **Dairy Product:** milk, cheese, butter, etc.
- ▶ **Egg and Egg Product:** chicken egg, other birds' egg, egg white, egg powder, etc.
- ▶ Feed, snacks, nutritional supplements, etc. for pet



Plants

- ▶ **Plants:** seedling, seed, etc.
- ▶ **Agricultural Products:** fruit, vegetable, grain, walnut, medicinal herb, etc.
- ▶ **Insect Pests:** insects with flesh, pathogenic fungus, soil, etc.
 ※ Prohibited to bring in: fresh fruit, fruit vegetable, unripe beans, unhusked walnut, rice seed, sweet potato, seedling (apple, grape), pathogens, live pest(including pet insects), earth or plants with earth

